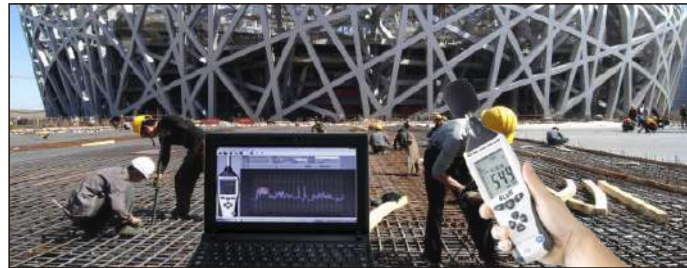


Professional Sound Level Meters with Datalogger ET-953/956/958



FEATURES

- This unit complies with the IEC61672-1 class 2
- MAX/MIN measurements      ● Overrange display
- Underrange display          ● A&C weighting
- FAST & SLOW response
- Analog AC/DC outputs for connection to frequency analyzer or X-Y shaft recorder
- PC real-time monitoring and recording(ET-956/958)
- Datalogger function(ET-958)
- Memory up to 262144 readings(ET-958)

Specifications

Model	ET-953	ET-956	ET-958
Applied standard: IEC 61672-1 Class 2	✓	✓	✓
Measuring level range: Lo:30 dB ~ 80 dB; Med:50dB ~ 100 dB; Hi:80 dB ~ 130 dB; Auto:30 dB ~ 130 dB	✓	✓	✓
Operating conditions: -20 ~ 60°C ; <90%RH (no-n condensation)	✓	✓	✓
Storage conditions: -20 ~ 60°C ; <90%RH (no-n condensation)	✓	✓	✓
Accuracy ±1.4dB	✓	✓	✓
Resolution:0.1db	✓	✓	✓
Frequency weighting: A & C	✓	✓	✓
Time weighting: Fast 125ms;slow (1s)	✓	✓	✓
Sampling time: 2 times/second	✓	✓	✓
Microphone:½ inch electret condenser microphone		✓	✓
Datalogger function			✓
Dimension(L*W*H)	252*66*33mm		
Weight	258g		

Accessories: User's manual, 9V battery, windscreen, regulator rod, Φ3.5 earphone plug, USB cable(ET-956/958), adaptor(ET-956/958), software(ET-956/958), tripod(optional), gift box, carrying case.



Sound Level Meter ET-933



FEATURES

- Applied standard: IEC61672-1 CLASS2
- Frequency weighting: A and C
- Time weighting: FAST and SLOW
- MAX/MIN record              ● Data Hold
- Over range indication      ● Analog bar-graph indication



Specifications

Model	ET-933
Applied standard	IEC61672-1 CLASS2
Measuring level range	Lo:30dB ~ 80dB Med:50dB ~ 100dB Hi:80dB ~ 130dB Auto:30dB ~ 130dB
Accuracy	± 1.4dB
Resolution	0.1dB
Frequency range	31.5Hz ~ 8kHz
Dynamic range	50dB
Frequency weighting	A & C
Time weighting	FAST 125ms;SLOW ( 1s )
Sampling time	2 times/second
Microphone	½ inch electret condenser microphone
Operating conditions	-20~60°C/-4~140°F ; <90%RH (Non-condensation)
Storage conditions	-20~60°C/-4~140°F ; <75%RH
Dimension(L*W*H)	189*62*33mm
Weight	178g

Accessories: user's manual, battery, wind screen, screw-driver,carrying pouch, gift box

